

50 years of handling success

50 Guttridge

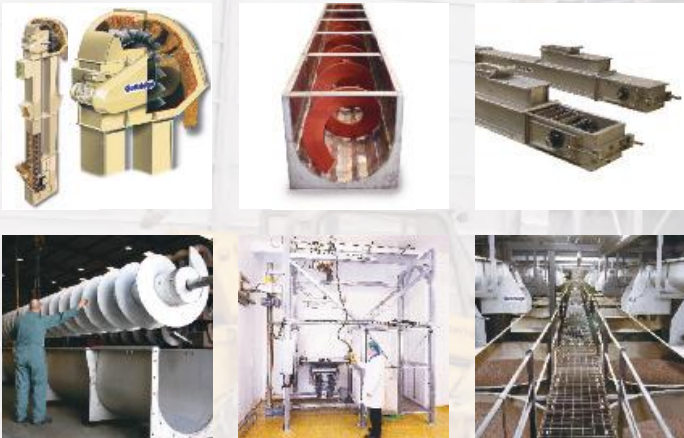
50 YEARS 1962 - 2012



Our Founder, the late Dr David Guttridge, liked to describe himself as "*an Animal Nutritionist by profession, but an Engineer by inclination*". In 1962, armed with these skills, he introduced mobile Animal Feed Milling to the UK by designing and building a ground-breaking machine for on-farm feed preparation. By the early 1970's Guttridge dominated the UK market with their Grindamix and Cubamix mobile mills, of which some 200 plied their trade across the country.

The principles of efficient design and skilful handling of bulk materials, which made these machines such a success, created the foundations of today's business and spawned a range of bulk handling machinery. Today's business is very different from that of 50 years ago, we now enjoy a technical understanding of how materials flow, together with state-of-the-art computers to help us design and manufacture our machinery, as well as run our business.

We are now proud to be Engineers by both inclination and profession.



Bulk Materials Handling

Guttridge Ltd Warentree Park Spalding Lincolnshire PE11 3UU
Tel +44 (0)1775 765 300 Email sales@guttridge.co.uk www.guttridge.co.uk

Celebrating 50 Years

1962

The late Dr David Guttridge designs the first Animal Feed Mill and builds it himself in the workshops of the local Ford Tractor Dealer (FoMoCo). It was a complex, but effective design with many chain and belt drives from the main 165hp Perkins V8 diesel engine.



1972

Major marketing push starts with a large stand at the Smithfield Show in London. Cubamix mobile pelleting machine introduced.



1975

The company is renamed Guttridge Services Ltd. We launch a new range of Bucket Elevators, Screw Conveyors and Dischargers. This was a logical development from the mobile mill days and drew on existing materials handling knowledge.



1976

The original Feedmill was redeveloped as a Straw Processing Plant to manufacture nutritionally improved straw pellets using a Caustic Soda treatment process.

1979

Son, Peter Guttridge joined the family business bringing professional engineering skills. Investment in a CNC Punching machine significantly improved sheetmetal manufacturing facilities.

First mobile feed mill completed in October, first sales invoiced to Atkinson Bros, Poultry Farmers.



1964

The static Feed Mill is built on the Hawthorn Bank site to manufacture concentrates for the mobile milling operation. Mobile mill sales to independent operators start.

1970

90 Guttridge Mobile Feed Mills operating in the UK, production running at one per week.

1973

Over 200 Grindmix and Cubamix mobile feed mills in operation producing over a million tonnes of animal feed per year. Several variants now available, including rolling mill and pellet press options. Stocken Hall Prison Farm near Oakham operated a static version until the 1990's. Exports started with an order for two Mobile mills from the Kenyan Government.



1974

All feed milling interests sold to Tindalls of Holbeach. The UK joins the Common Market, new regulations resulting from the Common Agricultural Policy destroy the economics of mobile feed milling. The heydays of Mobile feedmilling are over.



1981

Straw Plant remodelled to take the new Hesston 500kg big bales, big improvements in efficiency resulted in profitable operation.



An Autumn view of the Hawthorn Bank site, the engineering factory is the long building at the left, the offices are in the old family house at the far end.

Pea cleaning plant installed to clean freshly harvested dried peas for the mushy pea and snack food markets.

Guttridge Feed Services Ltd was started in 1962 by the late Dr David Guttridge at the family home in Spalding. He had recognised the commercial opportunity for using mobile machinery to manufacture a good quality animal feed using the farmer's own home grown cereals and straw. This created significant savings for the farmers in rural Lincolnshire, many of whom ran mixed farms with both arable and livestock interests.

1986

2D CAD system installed. Manual drafting was phased out over the next 3 years.



1987

Dr David Guttridge, the company founder, passes away 25 years after starting the company. His son, Peter, succeeds him.



1994

A Subcontract sheet metalwork service launched, it was centred around CNC Punching and the newly acquired Laser Cutter. Our first website is launched at www.guttridge.co.uk.

1995

Straw Plant closed due to its poor emissions record. A modern state-of-the-art Straw Plant was built on the outskirts of Spalding, increasing capacity to 25,000 tonnes/annum.



2002

Autodesk Inventor 3D CAD Systems installed and becomes the new standard for machine design. The subcontract services division is branded as "Laserfab" and develops rapidly as a dependable supplier of sheetmetal components and fabrications.



2004

Guttridge acquire the Intellectual Property and key assets of Carrier Bulk Materials Handling. We gain full knowledge and access to all of Carrier's customers, designs and sales & manufacturing records.



2005

Some Carrier machines are standardised as Guttridge machines, eg Slipform Belt Conveyors, Kleenbelt Belt Conveyors, Enmasse Elevators and Trench Intakes.



1988

Straw Plant remodelled to uprate capacity and improve reliability. Capacity doubled from 750 to 1500tonnes/month.



1989

Launch of Stainless Steel range of conveyors and elevators. This new range took us into the Food, Chemical and Pharmaceutical industries for the first time - an important strategic move.



1997

The BSE crisis cut our straw plant sales by 50% and threatened the viability of our straw operations.

2000

Guttridge Services Ltd relocated to a new purpose-built engineering factory on a 4 acre site in Spalding's Wardentree Lane Industrial Area. The original Hawthorn Bank premises was sold for residential housing.



2001

Our straw processing interests cease and our business concentrates totally on engineering manufacture.

2007

We invest in powerful new CNC machinery and a new spray paint booth to help raise quality of manufacture.



2008

Company name changed to Guttridge Ltd.

2012

Guttridge celebrates 50 years in business. The company is now focused on engineering manufacture and has become a leading supplier of Bulk Materials Handling equipment in the UK, with a fast developing reputation as an exporter. New and improved machines added to our portfolio regularly.

Guttridge

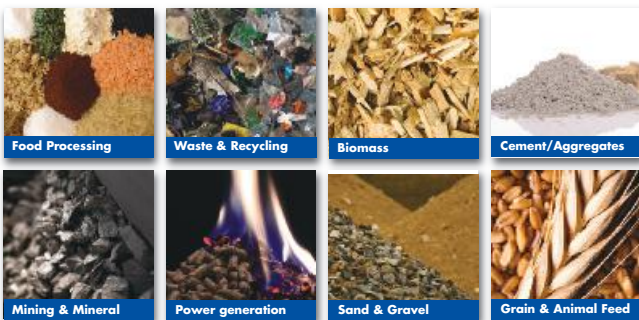
The Guttridge of today is a flourishing company, globally respected for delivering well-engineered materials handling solutions, yet still evolving to meet today's fast-changing industrial needs. We tackle applications in every industrial sector, from grain to cement, from food to pharmaceuticals. Indeed, we work at the forefront of materials handling technology supported by close connections with the UK's leading research establishments and University based solids handling experts. Most importantly we are committed to anticipating and meeting our customers' evolving requirements for higher throughput, maximum cost efficiency, lower energy consumption and exemplary reliability.

Tried and tested material handling equipment....

Our comprehensive range of materials handling equipment includes:

- Bucket elevators
- Screw conveyors and dischargers
- Chain conveyors and dischargers
- Belt conveyors
- Load and discharge hoppers
- Vertical blenders and live bins
- Slide valves, diverters, spouting, fittings and ancillary equipment

We supply everything from single machines to fully integrated handling solutions and we manufacture in both stainless steel and mild steel, producing durable equipment for most types of material. However, Guttridge isn't simply an off-the-shelf supplier, what sets us apart is our additional capability to design and build truly bespoke solutions for your specific application.



....for every material

Guttridge is all-embracing when it comes to the type of material that can be handled, but each new product presents a unique set of challenges. Our application experience is crucial in the development of an optimal solution, but so too is the technical knowledge of our engineers. They understand in detail the capabilities of the equipment and how to engineer specific features, for a tricky new product or for enhanced reliability for example. Our goal is to maximise return on investment over the lifetime of the equipment and we use the most up-to-date technology to do that.

A scientific approach to material handling

The starting point for any materials handling project is an understanding of the flow properties of the material to be conveyed. Here, experience is crucial and we rely heavily on the wealth of knowledge we've developed from dealing with a diverse spectrum of materials over many years. But science now has a key supporting role to play and we run sophisticated material characterisation tests in our specialist laboratory to help to confirm, or in the case of new materials define, how our machinery needs to be designed and configured. In this way we support our aim to deliver equipment that is right first time.



modern manufacturing practices

Our design and manufacturing processes similarly focus on delivery to the customer and we continue to invest in the technology needed to achieve excellence. The latest 3D CAD software is used for machinery design and visualisation, whilst the highly skilled workforce benefits from a modern plant with state-of-the-art computer controlled manufacture, assembly and painting facilities. We work hard to engender a culture of continuous improvement that is shared by every employee.



A trusted partner for each and every materials handling project

All these capabilities make us a strong partner for materials handling projects. Conveying requirements are constantly evolving in terms of scale and the range of materials handled. We face these challenges with considerable enthusiasm and with the drive, skills and applications expertise needed to deliver cost-effective systems that really work.



INVESTOR IN PEOPLE

